



# SpringField Controls

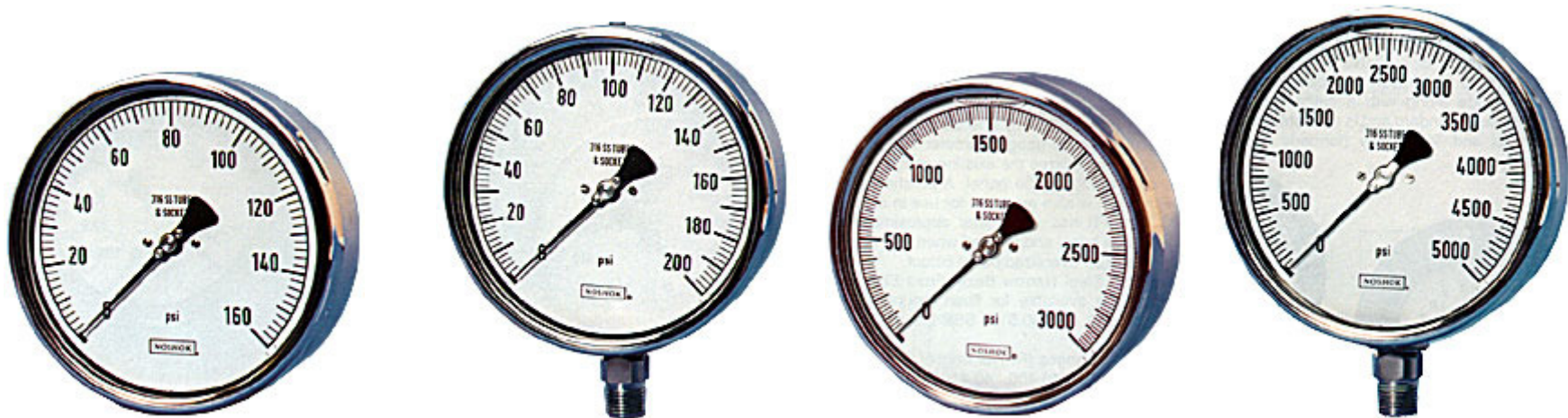
[Home](#) | [Products](#) | [Enquiry](#)

## **SpringField Controls Series 4100/5100 Stainless Steel Pressure Gages**

*1 1/2", 2 1/2", 4" & 6" Dry & Liquid filled, F.S. Ranges Vacuum to 30,000 PSI*

### **DESCRIPTION**

SpringField Controls 4100 (dry) and 5100 (liquid filled) series all stainless steel gages are the ultimate in corrosion resistant, heavy duty, vacuum and pressure gauges. They are used in corrosive service world-wide where ruggedness and reliability are critical. Typical applications include chemical and petroleum refineries, pharmaceutical, offshore drilling and production, papermills, fertilizer, etc



## **SPECIFICATIONS**

**SIZES:** 1 1/2, 2 1/2, 4 and 6 inch sizes

**CONNECTION:** 1/8" NPT on 1 1/2" sizes, 1/4" NPT on 2 1/2" sizes, 1/2" NPT on 4" and 6" sizes. Available in bottom and back configurations.

**CASE:** 304 Stainless Steel

**LENS:** Instrument glass on 1 1/2" and 4" sizes, Trogamide on 2 1/2" size, Safety glass on 6" size.

**BOURDON TUBE:** 316 Stainless Steel tube to 600 PSI, coiled safety tube above 600 PSI

**MOVEMENT:** Stainless Steel

**ACCURACY:** 2.5% Full Scale on 1 1/2" size; 1.5% Full Scale on 2 1/2" size; 1% Full Scale on 4" and 6" sizes.

**AVAILABLE RANGES:** Vacuum and Compound through 30,000 PSI. Dependent on model and size.

**SAFETY:** Models 4100, 5100, safety relief disk on back and top of case; model 60.400, 60.410 safety relief disk on rear of case.

**OPTIONS AND ACCESSORIES:** Panel mounting options, orifices, adjustable pointers, max indicating pointers, rubber case protectors, special dials, metric dials, special connections and more.

**WORKING PRESSURE DYNAMIC:** 60% of dial range

**STATIC:** 90% of dial range

**TEMPERATURE:** 400 SERIES: 40°F to 260°F

(-40°C to 127°C) 500 SERIES: 0 Degrees to 160°F  
(-18° to 71°C)